

# NMSL MAKERSTATE INITIATIVE

## FY2014 - FY2015 // STATISTICS & FINAL REPORT



PAGE 2: Program Overview

PAGE 3: Professional Development

PAGE 4: Bookmobile Programs

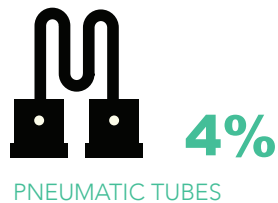
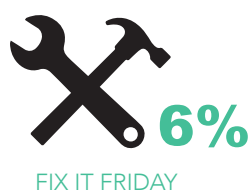
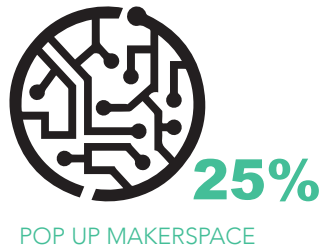
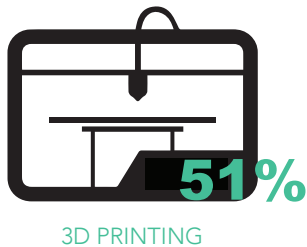
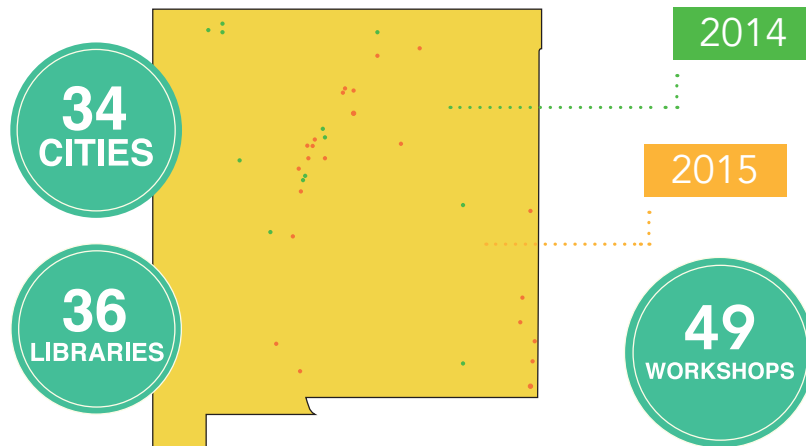
PAGE 5: Maker Hubs

PAGE 6: Final Stats for FY 2014

PAGE 7: Final Stats for FY 2015



## LIBRARY PROGRAMS



122



345



729



683

TOTAL  
PARTICIPANTS  
**1,879**



INSTITUTE of  
**Museum and Library**  
SERVICES



### PARACHUTE FACTORY

166 Bridge Street  
Las Vegas, New Mexico 87701

505.652.2349

[parachutefactory.org](http://parachutefactory.org)  
[themakerstate.com](http://themakerstate.com)

[info@parachutefactory.org](mailto:info@parachutefactory.org)



## PROFESSIONAL DEVELOPMENT

The NM Makerstate Initiative provides professional development opportunities to librarians interested in hosting makerspace workshops in their libraries. Training is provided by Parachute Factory, a nationally recognized community makerspace located in northern New Mexico. The Makerstate Initiative focuses trainings around maker education and maker empowerment.

Parachute Factory is one of 35 members of Harvard University's Agency by Design Learning Community - a collective of professional maker educators from around the country. Agency by Design provides educational frameworks for maker education called thinking routines. These routines are at the heart of the workshops and trainings provided to New Mexico libraries through the NM Makerstate Initiative.

### **AbDLC THINKING ROUTINES**

#### ***PARTS, PURPOSES, & COMPLEXITIES***

This thinking routine helps students slow down and make careful, detailed observations by encouraging them to look beyond the obvious features of an object or system.

#### ***PARTS, PEOPLE, & INTERACTIONS***

This thinking routine helps students slow down and look closely at a system. In doing so, young people are able to situate objects within systems and recognize the various people who participate—either directly or indirectly—within a particular system.

#### ***THINK, FEEL, CARE***

This routine encourages students to consider the different and diverse perspectives held by the various people who interact within a particular system.

#### ***IMAGINE IF...***

This routine first encourages divergent thinking, as students think of new possibilities for an object or system, and then encourages convergent thinking, as students decide upon effective approach to build, tinker, re/design, or hack an object or a system.



### PARACHUTE FACTORY

166 Bridge Street  
Las Vegas, New Mexico 87701

505.652.2349

[parachutefactory.org](http://parachutefactory.org)  
[themakerstate.com](http://themakerstate.com)

[info@parachutefactory.org](mailto:info@parachutefactory.org)





## BOOKMOBILE PROGRAMS

The New Mexico State Library's Rural Bookmobile serves more than 10,000 patrons across the most isolated regions of New Mexico. In Spring 2015, the NM Makerstate Initiative launched its Rural Bookmobile Pilot Program - a mobile version of the NM Makerstate's Pop-Up Makerspace events tailored to serve rural bookmobile stops. The NM Makerstate crew hit the road with the NE Rural Bookmobile in May, 2015 with programs in 3D printing. Stops on the trips included: Roy Elementary School, Mosquero Schools, and the Early Childhood Center at Pecos Schools.

The NM Makerstate Initiative aims to spread making to all areas of the state. Working with the NMSL Rural Bookmobile extends the reach of this program to some of the smallest and isolated communities in the state.



### PARACHUTE FACTORY

166 Bridge Street  
Las Vegas, New Mexico 87701

505.652.2349

[parachutefactory.org](http://parachutefactory.org)  
[themakerstate.com](http://themakerstate.com)

[info@parachutefactory.org](mailto:info@parachutefactory.org)





INSTITUTE of  
**Museum and Library**  
SERVICES



## PARACHUTE FACTORY

166 Bridge Street  
Las Vegas, New Mexico 87701

505.652.2349

[parachutefactory.org](http://parachutefactory.org)  
[themakerstate.com](http://themakerstate.com)

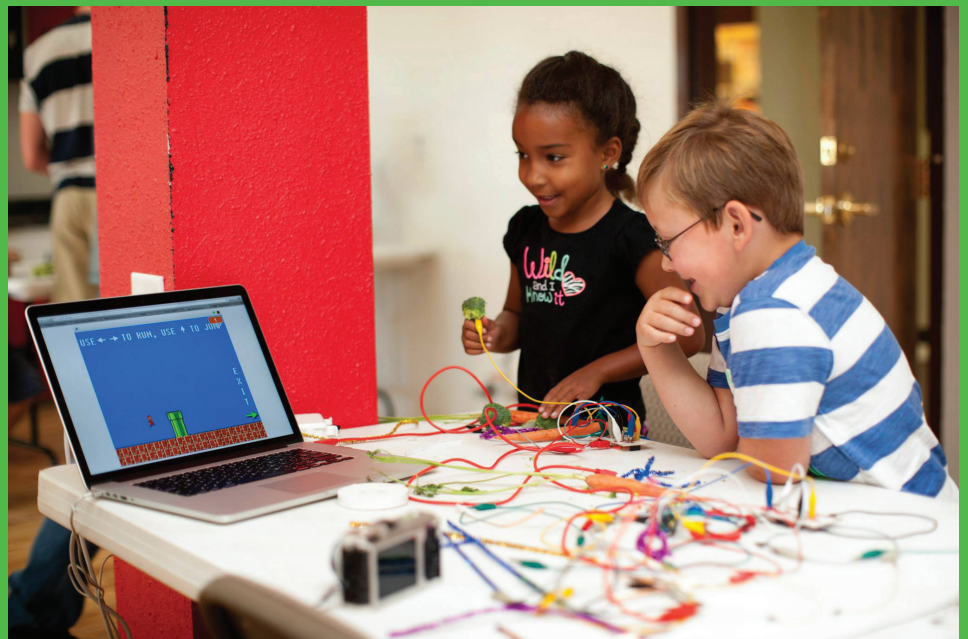
[info@parachutefactory.org](mailto:info@parachutefactory.org)



## LIBRARY MAKER HUBS

Maker Hubs are regional centers within the New Mexico State Library network. The NM Makerstate Initiative supports Maker Hub libraries by providing equipment, supplies, and training at each site. In 2015, two libraries within the NMSL network were selected as hubs: Loma Colorado Main Library in Rio Rancho, NM (Albuquerque metro area) and Socorro Public Library in Socorro (Central NM), and plans are in the works to establish several more hubs in the future.

Maker Hubs host regular makerspace programming at their libraries, and work to build communities of makers in the areas they serve. As the NM Makerstate Initiative moves forward the hope is that its hubs will be among the first libraries in the state to establish permanent makerspaces for local and regional patrons.



# NMSL MAKERSTATE INITIATIVE

## FINAL STATISTICS FOR FY2014

CITY	BOYS	GIRLS	MEN	WOMEN	TOTAL PARTICIPANTS
Fort Sumner	0	2	2	3	7
Carlsbad	13	8	7	9	37
Socorro	9	9	3	8	29
Magdalena	3	3	4	7	17
Laguna	3	2	1	4	10
Taos	3	3	2	6	14
Taos	2	5	1	5	13
Questa	6	7	2	5	20
Bloomfield	6	8	0	5	19
Farmington	219	239	0	27	485
Aztec	1	12	2	5	20
Aztec	5	8	4	5	22
Magdalena	7	7	1	4	19
Socorro	13	16	6	9	44
Socorro	22	29	3	11	65
Socorro	19	24	4	9	56
Albuquerque	6	4	18	20	48
Edgewood	26	22	5	12	65
Corrales	6	15	1	5	27
Eldorado	1	0	1	0	2
Santa Fe	9	12	4	12	37
Española	7	5	3	6	21
Pojoaque	7	4	2	6	19
Santo Domingo	8	4	1	3	16
Los Lunas	17	9	3	8	37
Bosque Farms	0	2	0	2	4
TOTAL 2014	418	459	80	196	1,153



# NMSL MAKERSTATE INITIATIVE

## FINAL STATISTICS FOR FY2015

CITY	BOYS	GIRLS	MEN	WOMEN	TOTAL PARTICIPANTS
Hobbs	15	21	1	4	41
Jal	9	5	2	6	22
Socorro	8	6	4	4	22
Eunice	21	11	0	5	37
Rio Rancho	18	14	4	6	42
Lovington	8	9	0	10	27
Edgewood	32	24	6	12	74
Tatum	5	7	1	5	18
Taos	0	0	2	2	4
Albuquerque	24	30	12	15	81
Clovis	17	18	0	18	53
Anton Chico	9	10	1	4	24
Santa Clara	8	5	0	4	17
Belen	19	33	2	26	80
Bernalillo	7	3	0	1	11
Belen	8	5	1	4	18
Corrales	5	10	1	0	16
Cimarron	14	26	0	3	43
Las Cruces	9	5	1	2	17
Hatch	4	8	1	1	14
Santa Fe	9	7	1	7	24
Española	5	3	2	5	15
Pojoaque	11	10	0	5	26
TOTAL 2015	265	270	42	149	726
TOTAL PARTICIPANTS	683	729	122	345	1,879

